



# TANKS @ OMM



## What Makes a Tank?

Tanks are armored tracked vehicles used in combat, armed with guns to fight other tanks, and also able to support infantry.

### Abrams M1

The 1500HP M1 started with a 105mm gun but increased to 120mm by the 1990s and continues to hold a M2 .50 caliber (in Tank Command position) and two 7.62mm M240 guns (one in Loader position, one mounted in sync with the 105mm gun).

### Patton M60A3

M60A3s brought tanks into the computer age with many engineering advancements.

### Sherman M4A\*

The WW2 “Medium Tank” merged “Light” mobility and “Heavy” armored qualities.

## Who Does What?

The **Tank Commander** assesses target needs including where and what. The **Loader** loads the guns based on these in order for the **Gunner** to aim the shot accurately. A separate driver and additional crew may be added depending on model.

## Light Tanks

Primarily used for reconnaissance or gunnery in response to infantry and fortifications, not other tanks.

### Bulldog M41A3

The M41A3 introduced the fuel injection engine, hydraulic traverse system, and infrared vision.

### Ha-Go Type 95\*

The Japanese Ha-Go T-95 was designed for infantry support but also engaged in tank vs. tank combat.

## Self-Propelled Artillery

Previously, artillery was trailered by horse or a separate motorized vehicle but with the evolution of engine vehicles, artillery was motorized, allowing it to “self-propel” as part of a motorized vehicle.

### Priest M7B1

The M7B1 transitioned from half track/half wheels to a fully tracked vehicle with attached artillery.

### Duster M42A1

Anti-Aircraft M42A1 used visual lineup — radar would come later — to fire upon enemy aircraft.

## Tech Jumps

**Electronic computers** replaced mechanical computers with the M1, providing wind speed, barometric, and temperature measurements, allowing for laser tracking to identify and lineup a target for a 1st shot hit, rather than adjusting for a 2nd shot hit.

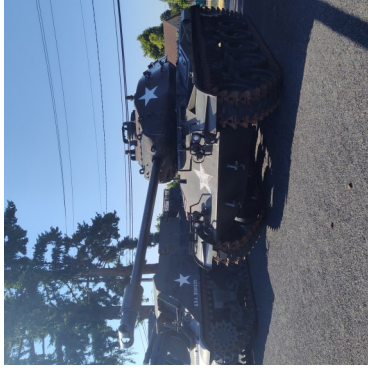
The M60A3 introduced **neutral steering** (1 track goes forward, 1 goes in reverse), allowing for left/right turn steering. On the earlier versions, one track would lock allowing the tank to spin to a new direction and then unlock to drive straight forward.

*\* found at the AFRC entrance*

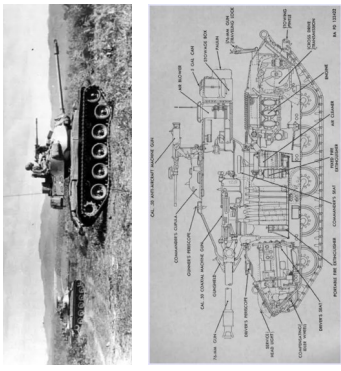




**Priest M7B1**



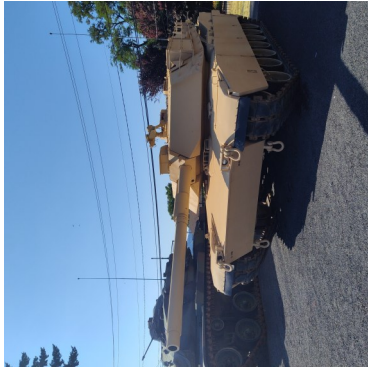
**Bulldog M41A3**



**Duster M42A1**



**Patton M60A3**



**Abrams M1**



**Sherman M4A**



**Ha-Go Type 95**